

# HID TripTick™ 220

## Barcode, NFC & cEMV Reader



### ONE READER FOR ANY TICKET

The state-of-the-art TripTick 220 barcode and NFC/RFID reader includes contactless EMV payment capability. The TripTick 220 offers (EMV) Level 2 certification, allowing for applications where contactless payments are required. It offers PCI and SRED compliance for contactless payments using VISA, MasterCard, AMEX, JCB and Discover schemes. (View the TripTick 220 certification or visit the PCI website). In addition, it also offers the reading of 1D/2D barcodes and RFID/NFC tickets and tokens from mobile phones, tablets, wearables, contactless cards and paper in any orientation.

### NO-NONSENSE INSTALLATION

TripTick 220 offers operators the ultimate no-nonsense installation. Its small footprint, low profile, slot-in design enables easy integration into kiosks, ticket machines, turnstiles and access gates. Furthermore, its rugged water-resistant construction, with no moving parts, enables it

to withstand years of indoor and outdoor public access use.

### POWER OVER ETHERNET

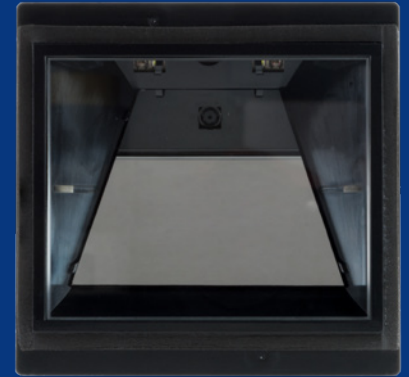
An option for Power over Ethernet (PoE) allows installation without a dedicated power supply. The device is also capable of RS422 connection at up to 1500m.

### PROVEN HERITAGE

TripTick 220 retains the key aspects of the size and shape of our proven LSR116 and LSR118 products, however its design delivers a significantly increased active scan area to further improve its barcode reading performance. Optimized imaging ensures read reliability and high-speed performance capturing and decoding all popular linear, PDF417 and 2D symbologies.

### APPLICATIONS

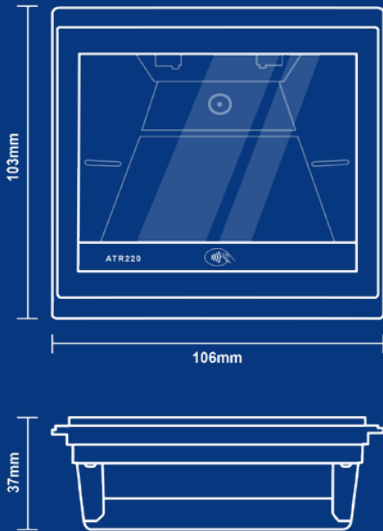
- Ticket validation for public transport, car parking, stadia and events
- Financial and other self-service kiosks
- Retail POS terminals
- Casino and TITO gaming machines



### FEATURES:




- Contactless Payments - Works with all popular contactless cards & is cEMV - L2 Certification (VISA, MasterCard, AMEX, JCB, Discover) & The PCI Security Standards Council (PCI) Secure Reading and Exchange of Data (SRED) - V5.0
- Barcode Reading - Reads 2D, PDF417 and linear barcode symbologies
- Low Profile - Only 36.9mm high with a single cable connection to host computer
- IP67 Sealed - Front face sealed for integration into indoor/outdoor kiosks & gates
- Reads Any Media - Optimized focal distance design improves read performance for all media
- Designed for Frontline Use - LED user feedback for intuitive use and updated UltraGlass® option for extreme environments
- Connection Options - USB (HID, serial or keyboard), RS232, RS485, Ethernet interface options
- Power Over Ethernet - Option for Power over Ethernet (PoE)

# HID TripTick™ 220





## FEATURES

### Connection Types

-  USB
-  Ethernet
-  RS232
-  RS485

### Technology

-  cEMV
-  NFC / RFID
-  QR/Barcode

## HID TripTick™ 220

READING CAPABILITIES	
<b>Barcode Symbologies Read</b>	Linear: EAN, UPC, Code 2 of 5, Interleaved 2 of 5, IATA 2 of 5, Code 39, Code 128 2D: PDF417, Aztec, DataMatrix and QR codes Media types read: Smartphone/tablet/smartwatch displays & paper tickets
<b>Contactless Reader</b>	Supported media: ISO14443 type A and B cards (Java cards); max baud 424K (extendable to 848K) MIFARE Ultralight (UL-C, UL-EV1), MIFARE DESFire, MIFARE Plus, MIFARE Classic, MIFARE SmartMX Operating frequency: 13.56 MHz Operating distance: 40 mm
<b>Contactless Payments</b>	Integrated EMV L2 Payment Kernels with Level 2 Certification (VISA, MasterCard, AMEX, JCB, Discover) PCI SRED - V5.0
ELECTRONIC	
<b>Power Supply</b>	Via ext. 5V PSU
<b>Interface</b>	USB composite device, with: HID, CDC Serial or Keyboard interface for barcode reading CCID PC/SC interface for NFC Serial device, with barcode, NFC reader as separate devices (RS232/RS422/RS485) Ethernet PoE (Power Over Ethernet)
PHYSICAL	
<b>Dimensions</b>	4 x 4 x 1 in (106 x 103 x 37 mm) (Without SAM option)
<b>Weight</b>	8 oz. (250g) (Without SAM option)
<b>Body</b>	Black ABS
<b>Glass</b>	4mm Toughened White Soda Lime; BS EN60068-2-75 & IEC 62262:2002, rated to 3.5J impact
<b>MTBF</b>	250,000 hours
THERMAL (AIR)	
<b>Temperature</b>	Operating -4°F to 140°F (-20°C to 60°C)
<b>Storage</b>	-22°F to 176°F (-30°C to 80°C)
<b>Humidity</b>	95% RH, non-condensing
APPROVALS	
EMC Approvals: FCC 47CFR Part 15 Subpart B Class A, EN 55032 Class B, EN 55035 Radio: FCC Part 15 Subpart C, CE: EN 301 489-1 v2.2.0, CE: EN 300-330 v2.1.1 Safety: IEC 62471: 2006, IEC 62368-1 Ingress: IP54 certified to BS EN 60529 Front Face ONLY - Tested to IPx7 Payment: EMV-L1, EMV-L2, PCI, TQM	

To learn more, please contact us at: [access-is@hidglobal.com](mailto:access-is@hidglobal.com)



hidglobal.com

North America: +1 512 776 9000 | Toll Free: 1 800 237 7769  
Europe, Middle East, Africa: +353 91 506 900  
Asia Pacific: +852 3160 9800 | Latin America: +52 55 9171 1108

**For more global phone numbers click here**

© 2023 HID Global Corporation/ASSA ABLOY AB. All rights reserved.  
2023-05-24-eat-triptick-220-reader-ds-en PLT-06269  
Part of ASSA ABLOY