



somfy

TECHNICAL DATA SHEET

25 - 03 - 2010

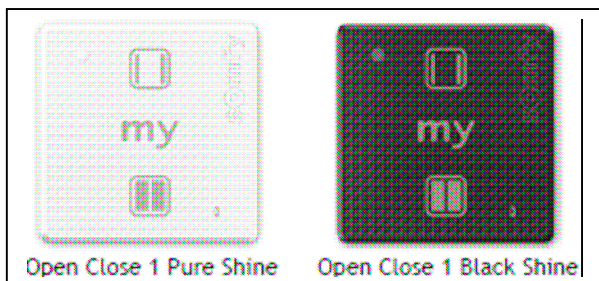
SDEV-FICA 89R1

Designation	Smooove 1 O/C RTS
Reference	1811011 (pure shine O/C) 1811009 (black shine O/C)
Range	RTS

FUNCTIONS

- Sensitive Command : Up, My, Down
- Setting with RTS ergonomic
- Composition: 1 module, 1 Mounting plate

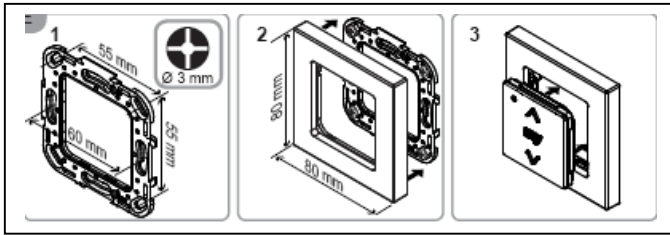
- Icon Battery life time
- Switch ON/OFF



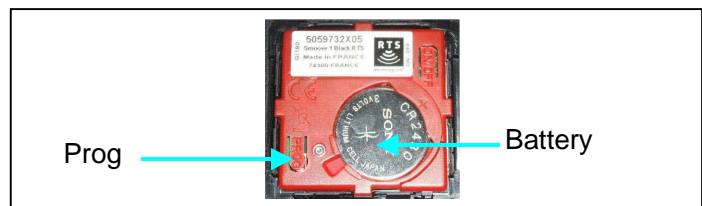
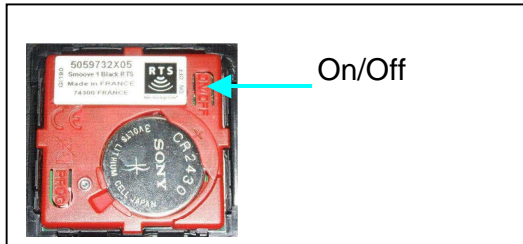
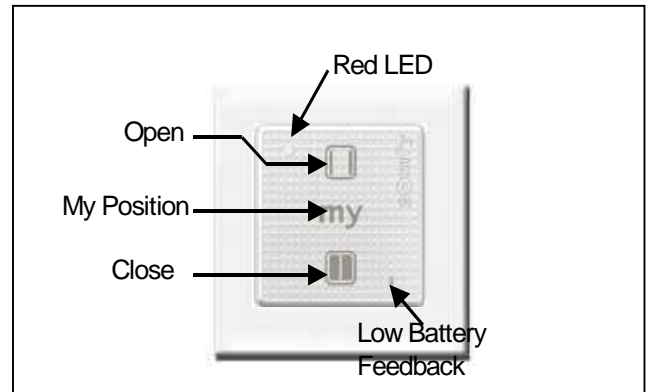
TECHNICAL SPECIFICATIONS

Box	Material	ABS & PC
	Color	Pure Shine, Black Shine,
mm	Size	Module 50 x 50 x 10
	Protection factor against solid & splashproof	IP 30
Battery	Voltage	3V
	Type	CR 2430
	Number	x1
Battery lifetime (at ambient temperature in typical conditions)		42 months
Radio frequency		433.42MHz
Protocol		RTS
Antenna		Integral
Temperature range	Storing	-30°C / +70°C
	Working	0°C / +60°C
Drop test		Installation: at 0°C 1/face (height : 1,2m) Using: at 20°C 1/face (height : 1,2m)
Wear resistivity		50
Cleaning products resistivity		250 cycles
Weight		24g
Standard (CE)		
<i>Safety of the user : EN EN60950-1 : 2006</i>		
<i>Health of the user : EN50371 : 2002</i>		
<i>Electromagnetic compatibility : EN61000-6-1: 2007_EN61000-6-3 : 2007_EN301 489-3 V1.4.1 : 2002_EN301 489-1 V1.8.1 : 2008</i>		
<i>Radio Spectrum : EN300220-2 V2.1.2 : 2007_EN300220-1 V2.1.1 : 2006</i>		

DESCRIPTION



Red cover for RTS technology



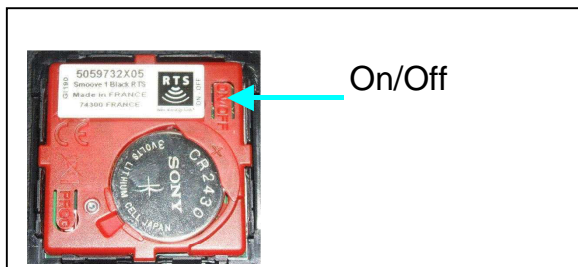
COMPATIBILITIES

Actuators :

- All RTS actuators

INSTALLATION

Switch ON/OFF

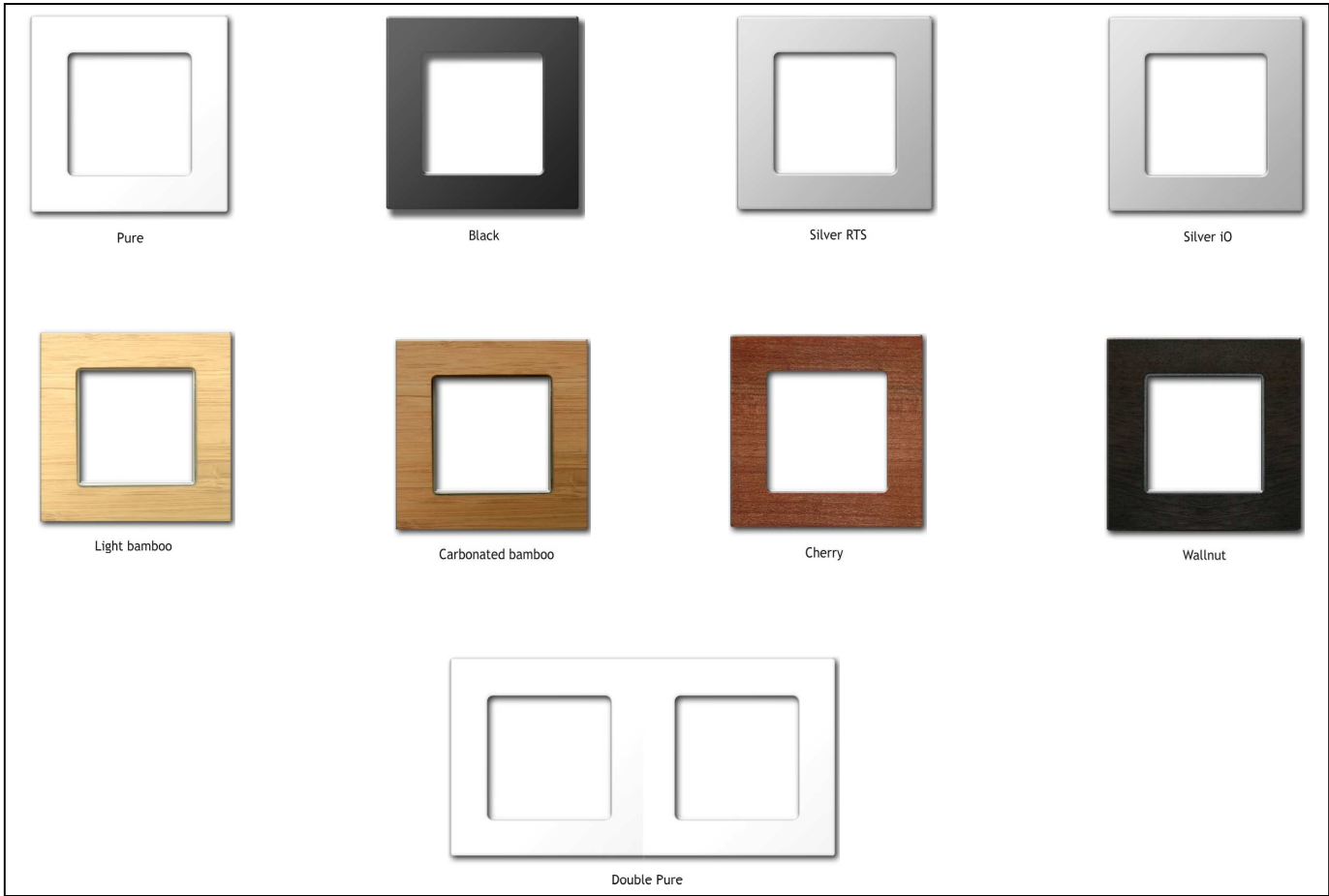


- Press On/Off button for wake up the sensitive pad.

Remark

The prog button is available when the module is OFF

Frame available



BE – R&D
F. GIGOUT

QUALITY
G. BRUNEAU

MARKETING
C.DENIAU